

**HEAVY
DUTY**

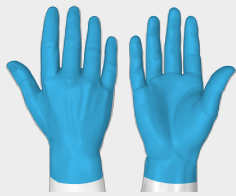
5039

HexArmor®

The SteelLeather® 5039 is a heavy duty solution for applications where high cut and puncture-resistance is needed for the entire hand. This glove was engineered to handle the roughest applications and keep users hands injury-free.

HexArmor® heavy duty gloves are built from the inside out, with technologies that provide industry-leading cut and industrial puncture resistance. We put everything we have into building our heavy-duty line of safety gloves, and the result is purpose-built PPE you can trust.

Protection zones



■ SuperFabric®
Protection Zone



ANSI/ISEA 105-2016
CUT

A8



ANSI/ISEA 105-2016
GRAM SCORE

5637



ANSI/ISEA 105-2016
PUNCTURE

5



ANSI/ISEA 105-2016
ABRASION

6



ANSI/ISEA 105-2016
CONTACT HEAT

2



EN 388: 2016

4X44F



EN 407: 2004

X2XXXX

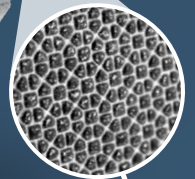
Attributes

Style: Heavy Duty

Grip: Dry or light oil

Cuff style: Canvas

Sizes: 7/S through 12/3XL



Flame
resistant



SuperFabric®
inside

Product features

SteelLeather®

- SuperFabric®* brand materials provide 360° industry-leading cut resistance (interior layer)
- Industrial puncture protection from wires, metal, wood, and glass
- Premium split cow leather palm provides a traditional style of comfort
- Grip in dry or light oil situations
- Reinforced index finger and thumb saddle
- Hi-vis, heat and flame-resistant back-of-hand material
- Canvas safety cuff
- Quality materials

Call **1.877.MY ARMOR** or visit **hexarmor.com**

HexArmor® products are cut and puncture resistant, NOT CUT AND PUNCTURE PROOF. Do not use with moving or serrated blades or tools. User shall be exclusively responsible to assess the suitability of the product as specified for any individual application or use. Protection zones are to be used as a general guide. Actual product protection zones may differ. Product features, design, protection zones subject to change.

Protected by patents and patents pending

*SuperFabric® is a registered Trademark of HDM, Inc.